

Search Results Map Tab

This map is the result of viewing listings from any type of search and then clicking the Map tab on the Search Results screen.

The colored squares on the map are the Listing Pins; each represents a property that came up in Search Results. The star in a circle icon indicates the property that is currently highlighted (yellow) in the Search Results Summary Panel List tab. Clicking any of the Listing Pins will produce an Info Bubble. This will give you quick links to more information about the property such as a link to the full tax report, and a mini listing history, if available. Other links are included, such as **More Info**, which opens a brief report in a single listing pane next to the map. **Move Listing** allows you to move listings in your control or suggest new locations for listings of another member. To do a radius search around that property, click on the **Radius Search** link in the Info Bubble; to zoom in to the area around the chosen property, click on the **Zoom Here** link. **Bird's Eye** links to an outside page to view an aerial image of the listing, if such imagery is available in your area.

Listing Pin Info Bubble



Listing Activity:

1340850	12/02/2013	Active	\$ 238,000	Select
670977	11/26/2003	Sold	\$ 169,930	Select

Within Locations:

Location [edit »](#)

[Radius Search](#) | [Street View](#) | [Bird's Eye](#) | [Zoom Here](#)

The **View Color Legend** icon at the bottom right of your screen will bring up the Color Legend, where you can see what the various colors of the properties mean. Using the drop-down at the right end of the white field, you may also choose to see properties color coded by Price or by Price Per Square Foot. In each case, see the color legend in the box to interpret results.

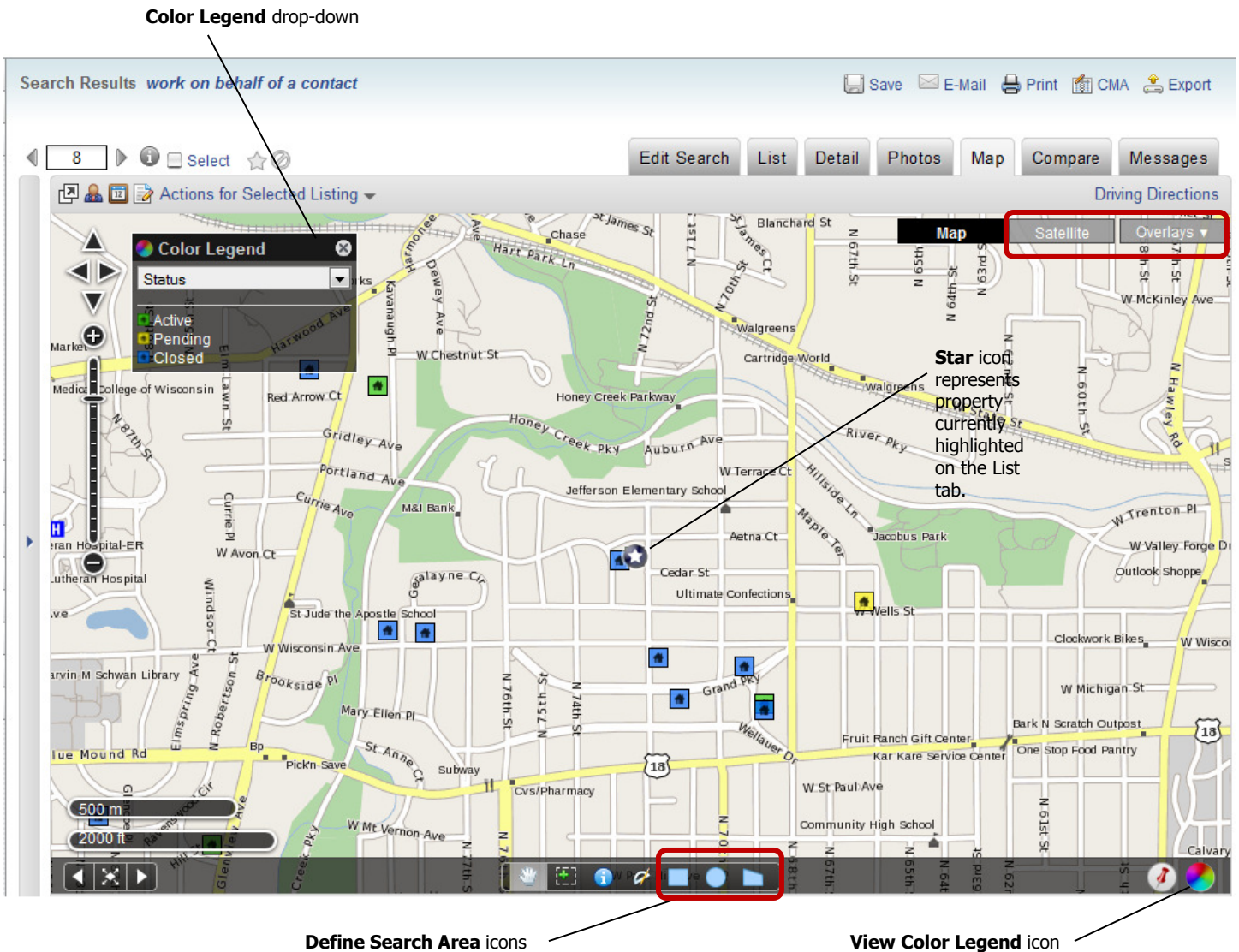
Clicking the **Satellite** button in the upper right corner of the map gives you a birds-eye satellite view of an area on the map. The closer you zoom in, the more detail you can see. In addition to viewing the listings on the map, you may also zip code areas, view parcel outlines including lot dimensions, highlighted main streets, street names, directions for flow of traffic, block numbers, and bus stops. You can also see many landmarks, such as parks, golf courses, hospitals, museums, cemeteries, colleges and universities.

The **Overlays** button gives you multiple options in viewing the map:

- **Listings** – This option lets you show or hide the listing pins on the map.
- **Drawn Shapes** – This option lets you show or hide any search area shapes you have defined on the map.
- **MLS Field Shapes** – This displays the outline of your selected municipality.
- **Acres** – Allows you to view the acreage for a parcel lot within FlexMLS on any of the maps, if available.
- **Community Maponics** – Displays community areas with their boundaries (not available for all areas).

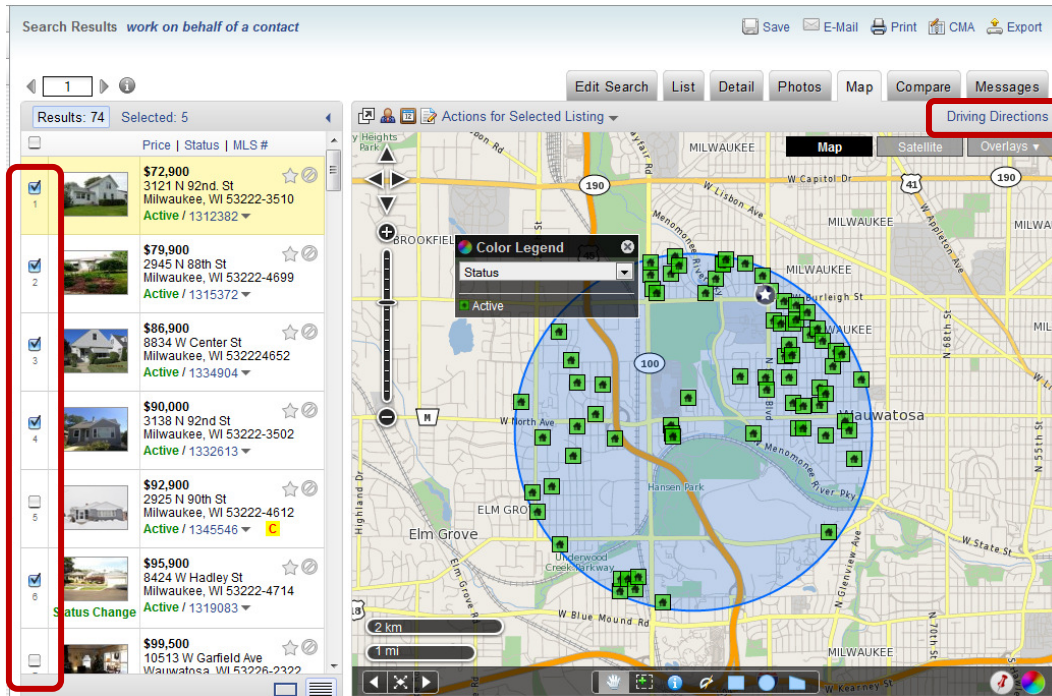
- **Counties** – Displays borders and labels counties viewed.
- **Imagery Parcels** – Using the Satellite map, this option allows you view lot lines of the properties.
- **Neighborhood Maponics** – Displays popular neighborhood areas with their boundaries (not available for all areas).
- **Subdivision Maponics** - Displays subdivisions with their boundaries (not available for all areas).
- **Zip Codes** – This option allows you to view your map areas bordered by zip code areas. This feature is best viewed in the non-satellite map.

NOTE: Using the Define Search Area shape tools will route you to Edit Search > Map Search.



Driving Directions

You can obtain driving directions from listings in FlexMLS via Google Maps. From the Map tab, select your desired listings in the Summary Listing panel to the left; click the **Driving Directions** link above the upper right corner of the map.



This will open a new browser window, routing you to Google Maps. If you need to change the route (as it will route them in the order they are on the Search Results screen), move them in the order you wish by moving the green lettered circle on the left side of the screen. For example, you would like to travel starting for the northwest side of town; you would like what is currently showing as 'D' on the map to be the second, or 'B' – single left-click and hold your mouse on the letter 'D' and drag it to the 'B' position. The map and directions will auto-adjust. Once you are complete, you can print this map or e-mail it from Google.

