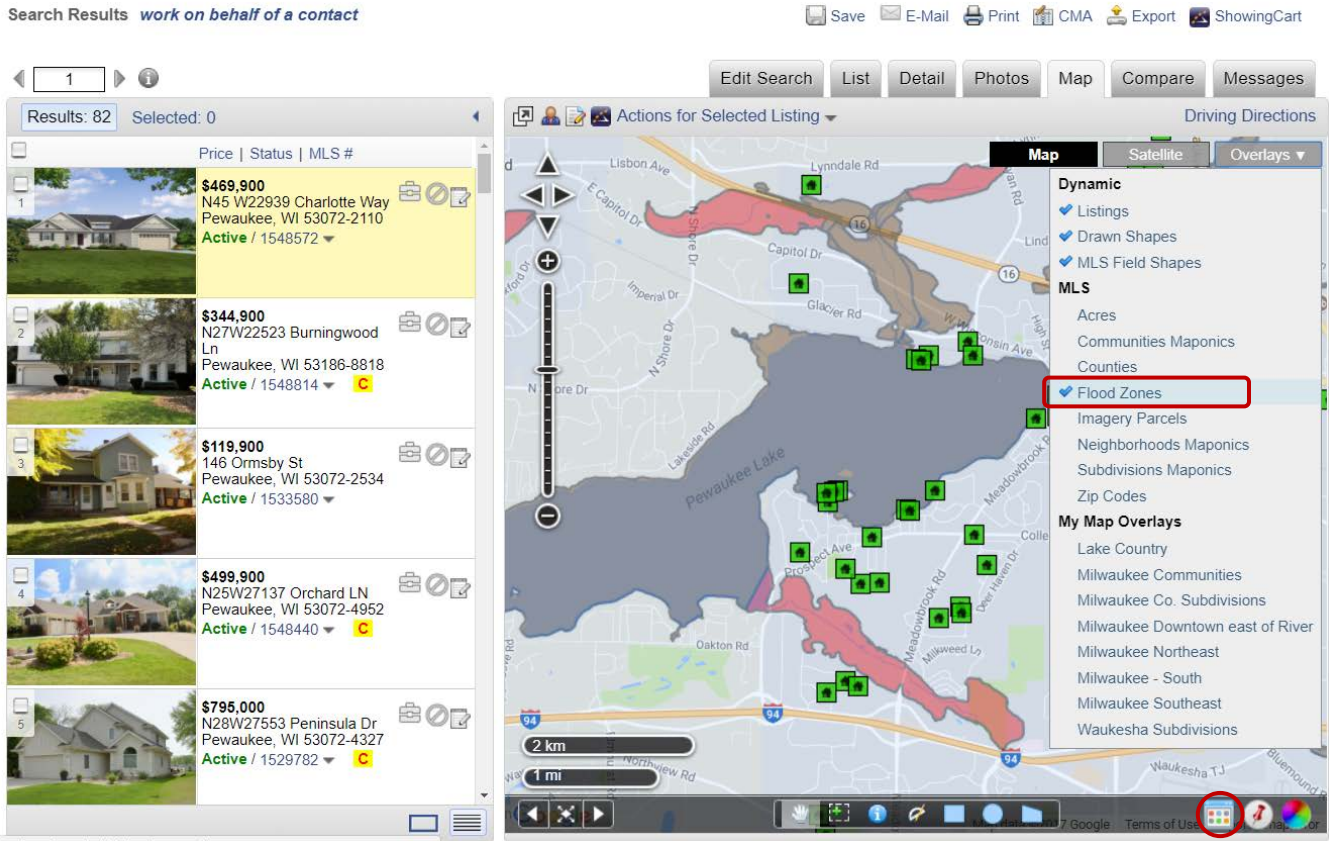


# Flood Zones Map Overlay

The Flood Zones map overlay – which is available for the all the maps in FlexMLS - represents the current effective flood data for our counties, where the maps have been modernized. It is a compilation of effective Flood Insurance Rate Map (FIRM) databases and Letters of Map Change (LOMCs). For more information, visit FEMA's Map Service Center (MSC). To access the Flood Zones overlay, click the **Overlay** button on any FlexMLS map.



The flood zones are coded by color. To view the legend for the flood zones, click the Flood Zones Color Legend (circled in the lower right corner of the map).

